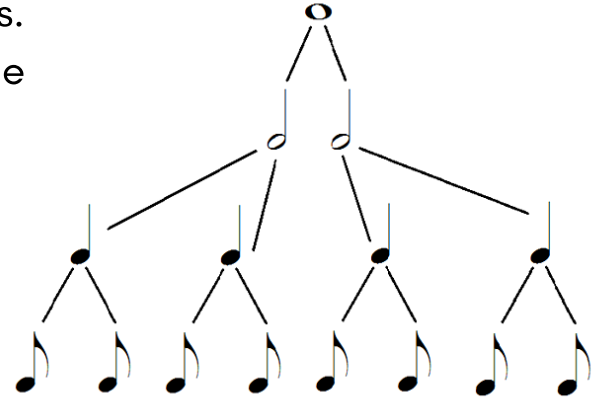


FLUTE STUDIO RHYTHM GUIDE

2. CREATE A RHYTHM TREE.

Most rhythmic values are divided up into **even** parts. For example, 2 half notes (2 beats) make up 1 whole note (4 beats).

Think of rhythm as a family tree, as the rhythm is broken down the less their beat value is.



★ **Solve** these rhythm trees out yourself!
(Not sure about the dots, read over the next two pages first!)



FLUTE STUDIO RHYTHM GUIDE

3. TIE-ING RHYTHM TOGETHER.

Ties connect rhythmic values of the SAME pitch to lengthen their regular value.



A regular half note is valued 2 beats, but when it is tied to a quarter note of the same pitch, it gains the value of 1 beat making the total of this rhythmic picture 3 beats.



The same thing goes with quarter notes tied to eighth notes. The quarter note gains half a beat making the value 1 1/2 beats.

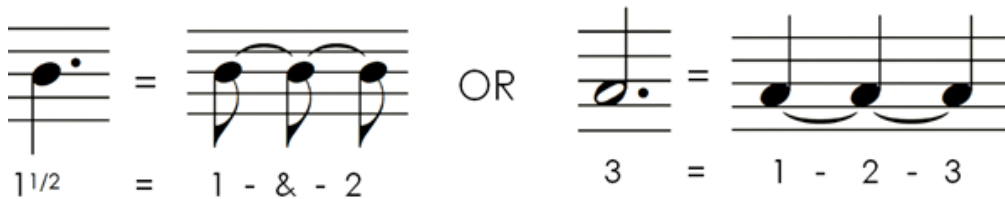
★ **Solve** the rhythms below! Write out each beat, clap & count the rhythm out loud, then play!



FLUTE STUDIO RHYTHM GUIDE

4. CONNECT ALL THE DOTS.

Dotted notes are like ties because they also lengthen the value of a given beat. The dot adds HALF the value of the note to itself.



Let's compare both tied notes and dotted notes seen above.

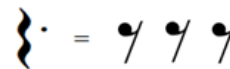
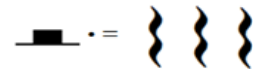
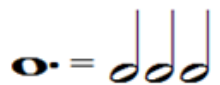
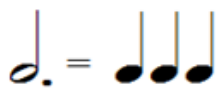
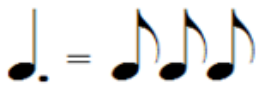
The rhythms above look different, but they acquire the SAME rhythmic value!

Instead of an even value when the dot is added, the value becomes odd (think The Rule of 3!) This applies for rests too!

NOTES

VS.

RESTS



Solve the rhythms below! Write out each beat, clap & count the rhythm out loud, then play!

