

MUSICAL CHEAT SHEET



KEY SIGNATURE

MEASURE

TREBLE CLEF

TIME SIGNATURE

IDENTIFY YOUR MUSIC
BASICS BEFORE YOU
PLAY!

= Flat (lowers pitch)

= Natural

= Sharp (raises pitch)

FACE notes
are the **SPACE**
notes!

Every **G**ood **B**oy **D**oes **F**ine on the LINE!

OR

Every **G**ood **B**urger **D**eserves **F**ries!

RHYTHM CHEAT SHEET



KNOW YOUR NOTES!

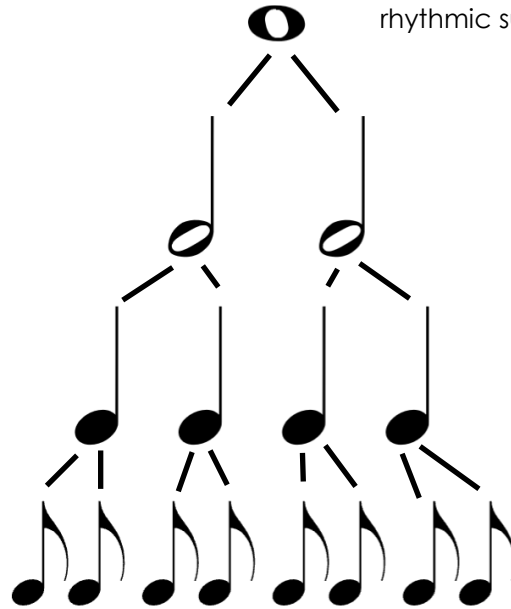
♩ = Whole Note (4 beats)

♪ = Half Note (2 beats)

♫ = Quarter Note (1 beat)

♮ = Eighth Note (1/2 beat)

★ Use this rhythm tree as your guide with rhythmic subdivisions!



RECOGNIZE YOUR RESTS!

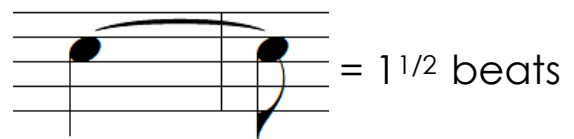
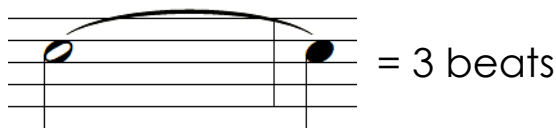
▬ = Whole Rest (4 beats)

▬ = Half Rest (2 beats)

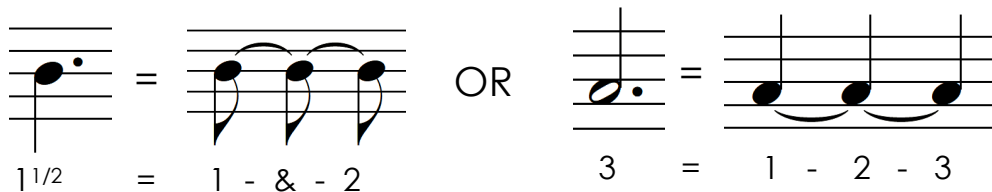
⏏ = Quarter Rest (1 beat)

♯ = Eighth Rest (1/2 beat)

Ties connect rhythmic values of the SAME pitch to **lengthen** their regular value.



Dotted notes are similar to ties because they also **lengthen** the value of a given beat. The dot adds HALF the value of the note to itself.



★ **HINT:** Think of the Rule of 3!